

MonashHeart, Monash Health is committed to providing outstanding cardiac services for cardiac patients of all ages

- ♥ Every 10 minutes, an Australian dies from cardiovascular disease making it the biggest killer of all Australians
- ♥ MonashHeart treats more acute heart attack patients than anywhere else in Victoria
- ♥ Each year MonashHeart treats over 5700 patients with acute heart problems, the most in Victoria
- ♥ MonashHeart operates one of the busiest cardiac CT scanners in the world
- ♥ MonashHeart is the only cardiac service in Victoria, South Australia and Tasmania to treat heart patients of all ages; from pre birth to our senior citizens
- ♥ MonashHeart is an internationally and nationally recognised leader in cardiovascular research



Fundraising Manager
Monash Health
Locked Bag 29
Clayton South 3169



MonashHeart
www.monashheart.org.au



Please use this space to write down any questions you may have:



Cardiac Computed Tomography (CT)

A Guide For Patients

What is Cardiac CT?

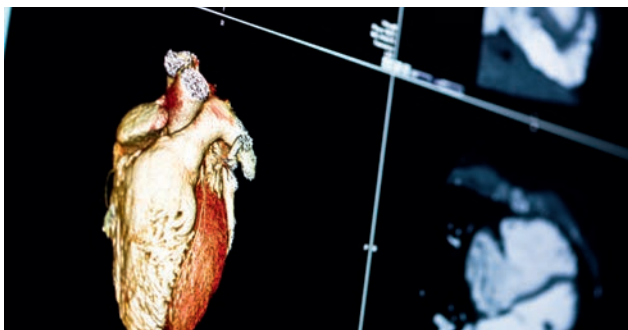


Cardiac CT refers to images obtained of your heart and coronary arteries using a computed tomography (CT) scanner.

The CT scanner is able to obtain similar information as an invasive coronary angiography (coronary angiogram) without the need for admission to hospital or catheters inserted through your groin or arm into the coronary arteries.

The most common reason why you would need a cardiac CT is to investigate chest pain. This scan may eliminate the need for you to have an invasive angiogram. However you may still need invasive angiography if significant blockages are found on CT.

MonashHeart's 320-slice cardiac CT scanner is ultra fast and is one of the most advanced and latest scanners on offer in the world. The machine works by taking multiple pictures of the heart and the coronary arteries. The patient lays flat on the scanner table then the machine rotates around the patient. By doing this, the machine is able to generate a three-dimensional (3D) picture of your heart. The patient lies on the scanner table for between five and 10 minutes. The images are obtained in less than one second and the scan is completely painless. At no time is the patient confined to a small space, nor do they have to enter into an imaging tunnel. The entire scan is taken in a light and open room.



These amazing scanner images allow us to see the heart, coronary arteries and chest in a 3D and colour format.



What is the difference between Cardiac CT and Conventional Angiography?

Cardiac CT is non-invasive whereas conventional angiography is an invasive procedure. Conventional angiography requires an arterial sheath or tube to be inserted into an artery in the groin or arm to allow access for a catheter to be passed into the heart. This is so the contrast can be injected straight into the arteries. Conventional angiograms can take up to half an hour or more and the patient is required to lie in bed for 4 hours post procedure once the tube from the groin is removed. Because conventional angiography is invasive, more risks are involved. Cardiac CT may avoid the need for you to have a conventional angiogram. Cardiac CT is quicker, safer and reduces the need for sedation.



What is Coronary Angioplasty?

Results from cardiac CT scans may reveal that angioplasty is required. This is when blocked or diseased heart arteries are repaired using small balloons and stents (metal tubes) that re-open the arteries and restore blood flow to the heart muscle. This procedure can take up to an hour, and then patients are often monitored in a cardiac care unit overnight and discharged the following morning. If significant blockages in your arteries are detected by cardiac CT, you may need conventional angiography and/or angioplasty to confirm and treat these.

I support MonashHeart, Monash Health in providing leading care to cardiac patients of all ages.

(Donations of \$2 or more are tax deductible ABN 82 142 080 338)

I enclose a cheque/money order made payable to MonashHeart, Monash Health for: \$

Please debit my credit/debit card for: \$

VISA Mastercard AMEX Diners

Card Nos:

Expiry: /

Cardholders Name:

Cardholders Signature:

Receipt sent to:

Name:

Address:

Postcode:

Phone: Email:

Is your donation a gift in memory? Yes No

In memory of:

Acknowledgement should be sent to next of kin:

Name:

Address:

I give MonashHeart the option of publishing my name in recognition of my support

Here's how to make your gift:

Call: 1300 MHEART **Fax:** 03 9594 6030

Post: complete and return this coupon to:

Fundraising, MonashHeart, Monash Health,
Locked Bag 29, Clayton South 3169

Thank you for supporting MonashHeart